



# SmartKeeda

The Question Bank

Presents

## TestZone

India's least priced Test Series platform

JOIN

### 12 Month Plan

2017-18 All Test Series

@ Just

# ₹ 399/-

300+ Full Length Tests

- Brilliant Test Analysis
- Excellent Content
- Unmatched Explanations

JOIN NOW

# Biology Science Questions for CDS Exams

## Biology Quiz 1

Direction : Study the following questions carefully and choose the right answer.

1. Bio-fertilizers convert nitrogen to \_\_\_\_\_.

- A. nitrates    B. ammonia    C. nitrogenase    D. amino acids

2. Which of the following fibers is considered as the strongest natural fiber?

- A. Cotton    B. Jute    C. Wool    D. Silk

3. Which of the digestive organs contains acid?

- A. Stomach    B. Small intestine    C. Appendix    D. Colon

4. In human beings, the opening of the stomach into the small intestine is called

- A. Caecum    B. Ileum    C. Oesophagus    D. Pylorus

5. The persons working in textile factories such as carpet weavers are exposed to which of the following occupational diseases?

- A. Asbestosis    B. Asthma and tuberculosis    C. Silicosis    D. Siderosis

6. Dim-vision in the evening and night results from the deficiency of which one of the following?

- A. Vitamin-A    B. Vitamin-E    C. Vitamin B12    D. Vitamin-C

7. Which of the following nutrients is not a structural component of the plant?

- A. Nitrogen    B. Calcium    C. Phosphorus    D. Potassium

**8. Assertion (A) Red blood cells burst when placed in water.**

**Reason (R) Due to osmosis, water enters into red blood cells.**

- A. Both A and R are true and R is the correct explanation of A
- B. Both A and R are true, but R is not the correct explanation of A
- C. A is true, but R is false
- D. A is false, but R is true

**9. The characteristic odour of garlic is due to which one of the following?**

- A. Chlorine-containing compounds
- B. Fluorine-containing compounds
- C. Nitrogen-containing compounds
- D. Sulphur-containing compounds

**10. Which of the following plants is not capable of manufacturing its own food?**

- A. Algae    B. Mushroom    C. Carrot    D. Cabbage

**Correct Answers:**

<b>1</b>	<b>2</b>	<b>3</b>	<b>4</b>	<b>5</b>	<b>6</b>	<b>7</b>	<b>8</b>	<b>9</b>	<b>10</b>
B	D	A	D	B	A	D	A	D	B

**Explanations:**

**1.**

Bio-fertilizers convert nitrogen to ammonia.

**2.**

Silk is a natural protein fiber, some forms of which can be woven into textiles. The protein fiber of silk is composed mainly of fibroin and is produced by certain insect larvae to form cocoons. It is considered to be the strongest natural fiber.

**3.**

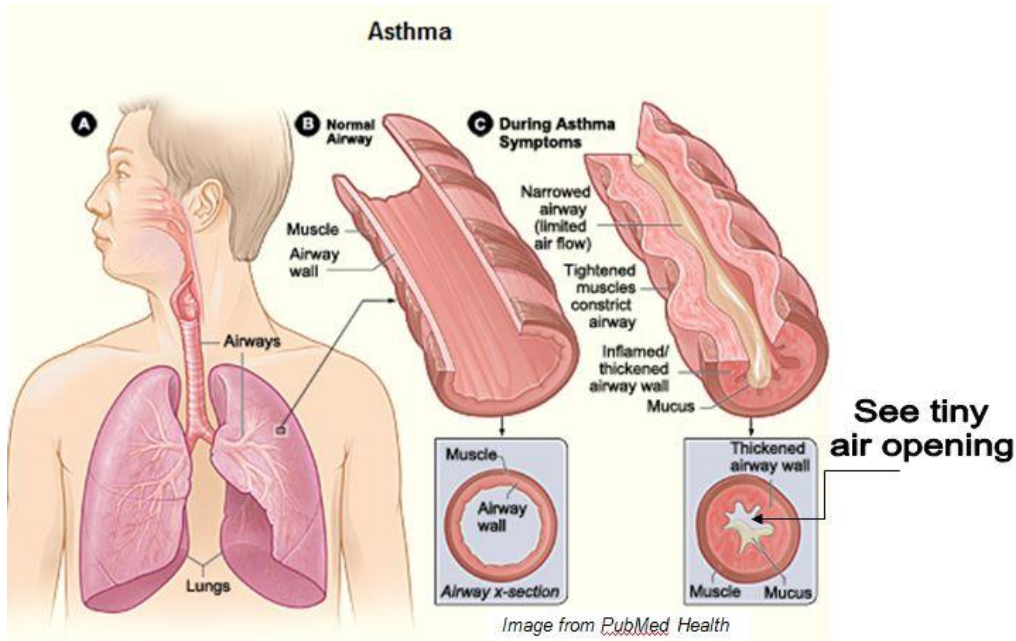
The Stomach is a major organ of the gastrointestinal tract and digestive system. It is a consistently J-shaped organ joined to the esophagus at its upper end and to the duodenum at its lower end. Gastric acid (informally gastric juice), produced in the stomach plays a vital role in the digestive process and mainly contains hydrochloric acid and sodium chloride.

**4.**

The stomach is divided into two parts fundic and pyloric region. The pyloric region opens into small intestine through pyloric valve of pylorus.

**5.**

Asthma is a chronic lung disease that inflames and narrows the air ways. Tuberculosis is a lung disease caused by mycobacterium tuberculosis. Workers in textile factories and carpet manufacturing units are the common sufferers of above mentioned diseases.



6.

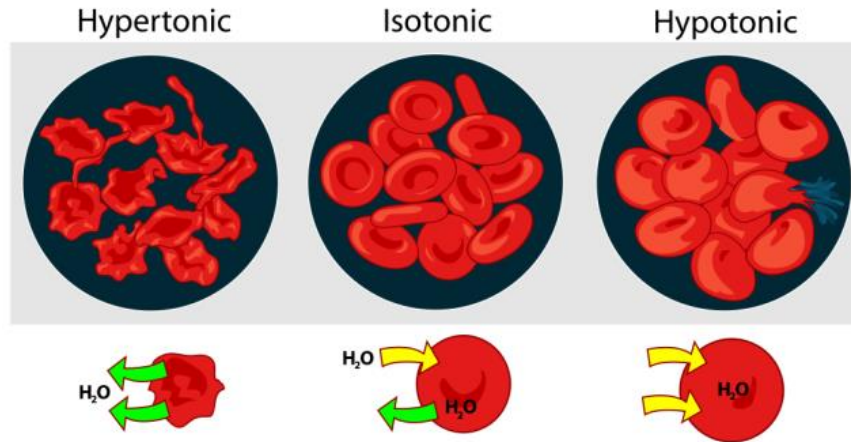
Deficiency of vitamin-A (retinol) causes night blindness deficiency, If also causes keratomalacia, xerosis cornea and Bitot's spot. High content of vitamin A is obtained from sheep's liver and butter.

7.

The main structural components of plant are nitrogen, calcium, phosphorus, magnesium etc.

8.

the density of rbc and water is different therefore when rbc comes in contact with water, the process of osmosis occurs .

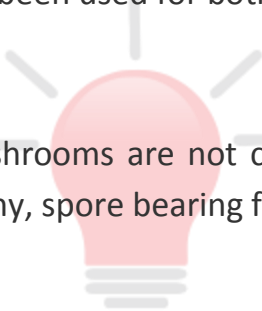


9.

Garlic (*Allium sativum*), is a species in the onion genus. It is native to central Asia and has been used for both culinary and medicinal purposes.

10.

Mushrooms are not capable of manufacturing their own food. A mushroom is the fleshy, spore bearing fruiting body of fungi. Fungi is heterotrophic.





# SmartKeeda

The Question Bank

प्रस्तुत करते हैं

## TestZone

भारत की सबसे किफायती टेस्ट सीरीज़

अभी  
जुड़ें

### 12 Month Plan

2017-18 All Test Series

@ Just

# ₹ 399/-

300+ फुल लेन्थ टेस्ट

- श्रेष्ठ विश्लेषण
- उत्कृष्ट विषय सामग्री
- बेजोड़ व्याख्या

अभी जुड़ें



**Smartkeeda**

The Question Bank