



SmartKeeda

The Question Bank

Presents

TestZone

India's least priced Test Series platform

JOIN

12 Month Plan

2017-18 All Test Series

@ Just

₹ 399/-

300+ Full Length Tests

- Brilliant Test Analysis
- Excellent Content
- Unmatched Explanations

JOIN NOW

Biology Science Questions for CDS Exams

Biology Quiz 3

Direction : Study the following question carefully and choose the right answer.

1. Malaria in the human body is caused by which one of the following organisms?

A. Bacteria B. Virus C. Mosquito D. Protozoan

2. Which one of the following diseases is caused by virus?

A. Tuberculosis B. Typhoid C. Influenza D. Diphtheria

3. Between which one of the following sets of blood groups, is the blood transfusion possible?

A. A and O (A donor) B. B and A (B donor) C. A and AB (A donor)

D. AB and O (AB donor)

4. Which of the following part of blood carry out the function of body defence?

A. Red blood cells B. White blood cells C. Platelets D. Haemoglobins

5. Which one of the following is not an insect borne disease?

A. Beri-beri . Kala-azar C. Malaria D. Plague

6. Consider the following statements.

1. Cigarette smoking exposes a person to benzene.

2. Benzene is a known carcinogen.

Which of the statements given above is/are correct?

A. Only 1 B. Only 2 C. Both 1 and 2 D. Neither 1 nor 2

7. Which one of the following glands produces the growth hormone (somatotrophin)?

A. Adrenal B. Pancreas C. Pituitary D. Thyroid

8. In the human body, Cowper's glands form a part of which one of the following system?

A. Digestive system B. Endocrine system C. Reproductive system

D. Nervous system

9. Cloves, used as a spice, are derived from which of the following plant parts?

A. Seeds B. Fruits C. Flower buds D. Young leaves

10. Which one among the following kinds of organisms resides in the roots of pulse plants to do nitrogen fixation?

A. Bacteria B. Fungi C. Protozoa D. Virus

Correct Answers:

1	2	3	4	5	6	7	8	9	10
D	C	C	B	A	C	C	C	C	A

Explanations:

1.

Malaria is a mosquito borne infectious disease of humans and other animals caused by Plasmodium protozoan. Severe disease is largely caused by Plasmodium falciparum while mild forms are due to P vivax, P ovale and P malariae.

2.

Influenza is viral disease and all other three diseases are bacterial. Influenza, commonly called flu, is an infectious disease caused by RNA viruses of family Orthomyxoviridae.

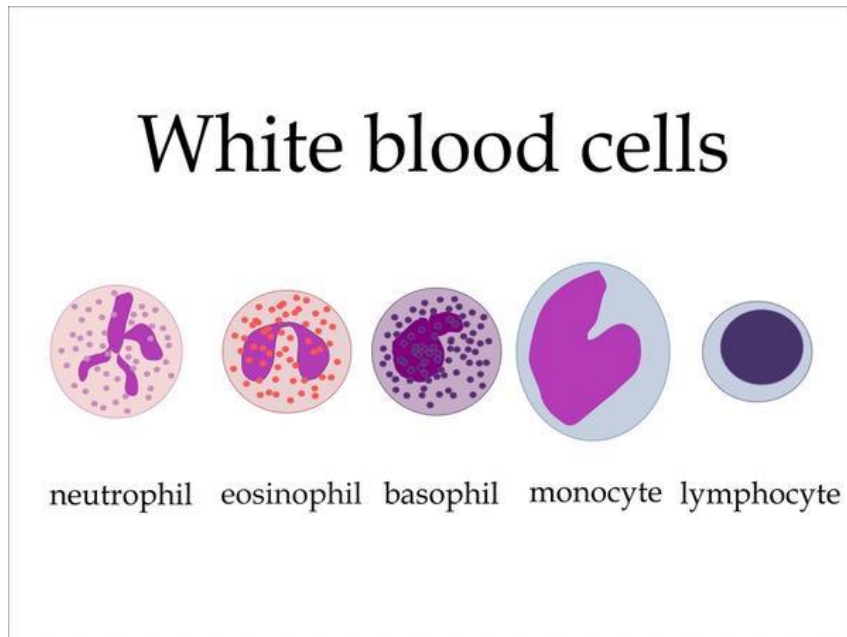
3.

O is the universal donor, but can receive blood only from O so option (a) and (d) are not possible. Regarding (b), B can't donate blood to A because of presence of antibodies against A antigen. So, (c) is the only case of possible blood transfusion as AB is the universal recipient.

		Donor's Blood Type							
		O-	O+	B-	B+	A-	A+	AB-	AB+
Patient's Blood Type	AB+	✓	✓	✓	✓	✓	✓	✓	✓
	AB-	✓		✓		✓		✓	
	A+	✓	✓			✓	✓		
	A-	✓				✓			
	B+	✓	✓	✓	✓				
	B-	✓		✓					
	O+	✓	✓						
	O-	✓							

4.

White blood cells carry out function of body defence. they are also called leukocytes or leucocytes, which are the cells of the immune system that are involved in protecting the body against both infectious disease and foreign invaders.



5.

Beri-beri is caused by the deficiency of vitamin-B1 or thiamine.

Kala-azar is caused by protozoan parasite.

Plague is caused by bacteria *Yersinia pestis*.

6.

The carcinogen is any substance causing cancer. Cigarette contains following dangerous substances.



7.

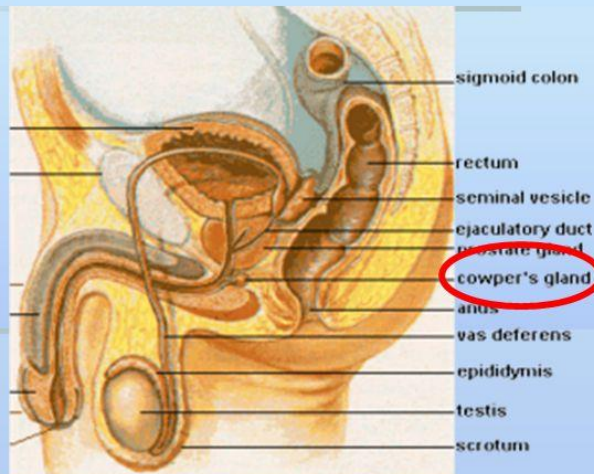
Somatotropic is secreted by the anterior pituitary. It is a peptide hormone that stimulates growth, cell reproduction and regeneration.

8.

Cowper's gland is a part of reproductive system. Cowper's gland is the bulbourethral gland present in human males. They are present in pair and produce viscous secretion called pre ejaculate that assist in reproduction.

Cowper's Gland

- Found near urethra below the prostate
- Prior to ejaculation this gland secretes a clear fluid that protects the sperm from acid in the male urethra



9.

Cloves are the aromatic flower buds of a tree in the family Myrtaceae. The clove tree is evergreen growing, bears large leaves and flowers grouped in terminal dusters.

10.

Rhizobium (a kind of bacteria) resides in plant roots of pulse plant to do nitrogen fixation.



SmartKeeda

The Question Bank

प्रस्तुत करते हैं

TestZone

भारत की सबसे क्फायती टेस्ट सीरीज़

अभी
जुड़ें

12 Month Plan

2017-18 All Test Series

@ Just

₹ 399/-

300+ फुल लेन्थ टेस्ट

- श्रेष्ठ विश्लेषण
- उत्कृष्ट विषय सामग्री
- बेजोड़ व्याख्या

अभी जुड़ें



Smartkeeda

The Question Bank