



# SmartKeeda

The Question Bank

Presents

## TestZone

India's least priced Test Series platform

JOIN

### 12 Month Plan

2019-20 All Test Series

@ Just

# ₹ 499/-

300+ Full Length Tests

- Brilliant Test Analysis
- Excellent Content
- Unmatched Explanations

JOIN NOW

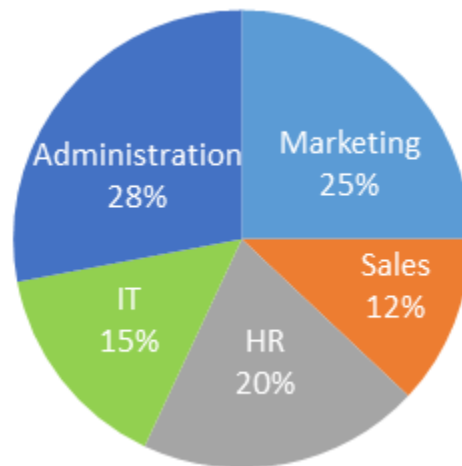
# Date Interpretation Mixed Chart Questions Quiz for SBI Clerk Pre and IBPS Clerk Pre Exams.

## DI Mixed Chart Quiz 51

Direction : Study the following pie chart and table chart carefully and answer the question given beside.

Percentage wise distribution of number of employees working in various departments of an organization

Total number of employees in the organization = 8500



Departments	Male : Female
Marketing	3 : 2
Sales	8 : 9
HR	7 : 10
IT	2 : 3
Administration	11 : 6

1. Total number of employees in Marketing department is what percent of number of females in HR department?

- A. 103.56%      B. 212.5%      C. 120.4%      D. 138.12%      E. None of these

2. Find the respective ratio of number of Males in Sales department and number of females in IT department.

- A. 51 : 32      B. 48 : 31      C. 32 : 51      D. 31 : 48      E. None of these

**3. Find the sum of total number of males in all the departments together.**

- A. 1876                      B. 4505                      C. 2465                      D. 3425                      E. None of these

**4. Find the difference between total number of males in Marketing and Administration departments together and total number of females in the same departments.**

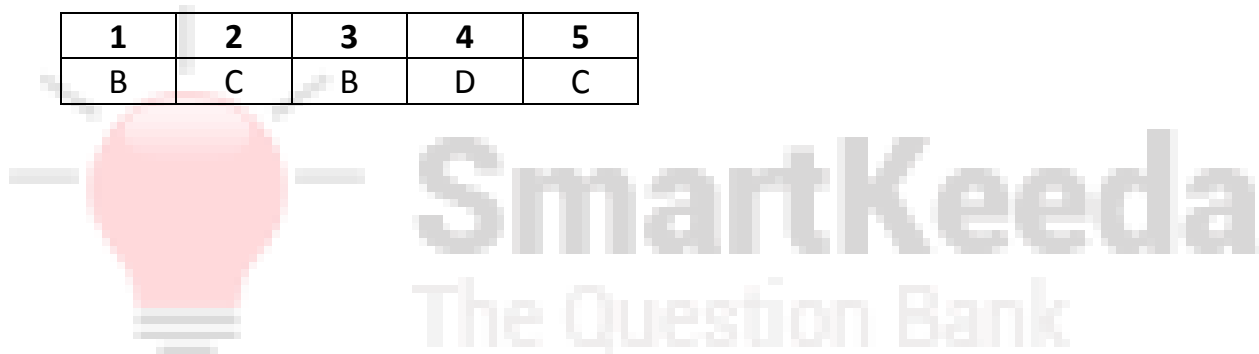
- A. 1015                      B. 955                      C. 865                      D. 1125                      E. None of these



**5. Total number of employees in Marketing and Sales departments together is what percent more than total number of employees in HR and IT departments together?**

- A. 4.13%                      B. 3.18%                      C. 5.71%                      D. 5.12%                      E. None of these

**Correct Answers:**

<b>1</b>	<b>2</b>	<b>3</b>	<b>4</b>	<b>5</b>
B	C	B	D	C



Join us on Telegram for more PDFs   
Click here 

## Explanations:

1. Total number of employees in Marketing department

$$= \frac{25}{100} \times 8500 = 2125$$

Number of females in HR department

$$= \frac{10}{17} \times \frac{20}{100} \times 8500 = 1000$$

$$\text{Reqd. \%} = \frac{2125}{1000} \times 100 = 212.5\%$$

Hence, option B is correct.

2. Number of males in Sales department

$$= \frac{8}{17} \times \frac{12}{100} \times 8500 = 480$$

Number of females in IT department

$$= \frac{3}{5} \times \frac{15}{100} \times 8500 = 765$$

$$\text{Required ratio} = 480 : 765 = 32 : 51$$

Hence, option C is correct.

3. Total number of males in all the departments together

$$= \frac{3}{5} \times \frac{25}{100} \times 8500 + \frac{8}{17} \times \frac{12}{100} \times 8500 + \frac{7}{17} \times \frac{20}{100} \times 8500$$

$$+ \frac{2}{5} \times \frac{15}{100} \times 8500 + \frac{11}{17} \times \frac{28}{100} \times 8500$$

$$= 1275 + 480 + 700 + 510 + 1540 = 4505$$

Hence, option B is correct.

Join us on Telegram for more PDFs  
Click here



4. Total number of males in Marketing and Administration departments together

$$= \frac{3}{5} \times \frac{25}{100} \times 8500 + \frac{11}{17} \times \frac{28}{100} \times 8500$$

$$= 1275 + 1540 = 2815$$

Total number of females in Marketing and Administration departments together

$$= \frac{2}{5} \times \frac{25}{100} \times 8500 + \frac{6}{17} \times \frac{28}{100} \times 8500$$

$$= 850 + 840 = 1690$$

$$\text{Required difference} = 2815 - 1690 = 1125$$

Hence, option D is correct.

5. Total number of employees in Marketing and Sales departments

$$= \frac{25 + 12}{100} \times 8500 = \frac{37}{100} \times 8500 = 3145$$

Total number of employees in HR and IT departments

$$= \frac{20 + 15}{100} \times 8500 = \frac{35}{100} \times 8500 = 2975$$

$$\text{Reqd. \%} = \frac{3145 - 2975}{2975} \times 100$$

$$= \frac{170}{2975} \times 100 = 5.71\%$$

Hence, option C is correct.

Join us on Telegram for more PDFs  
Click here





# SmartKeeda

The Question Bank

प्रस्तुत करते हैं

## TestZone

भारत की सबसे किफायती टेस्ट सीरीज़

अभी  
जुड़ें

### 12 Month Plan

2019-20 All Test Series

@ Just

# ₹ 499/-

300+ फुल लेन्थ टेस्ट

- श्रेष्ठ विश्लेषण
- उत्कृष्ट विषय सामग्री
- बेजोड़ व्याख्या

अभी जुड़ें