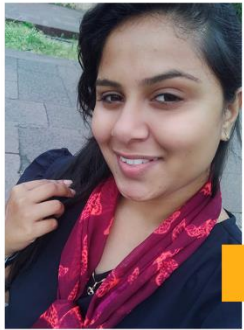




Friends!

We used **TESTZONE** and cracked Bank Exams

Rupali Gorle



IBPS Clerk 2021

Anjali Mangal



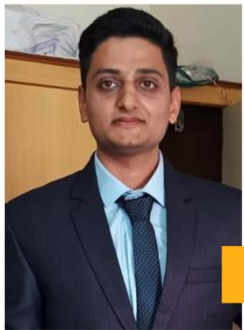
IBPS Clerk 2021

Preeti Kumari



IBPS PO 2021

Nagendra Singh



IBPS PO 2021

Aarvi Pareek



IBPS PO 2021

Abhishek Sinha



IBPS Clerk 2021

बैंक परीक्षाओ के लिए निश्चित रूप से
सर्वश्रेष्ठ मॉक टेस्ट सीरीज

Its Your Turn Now
Take A FREE Mock Test

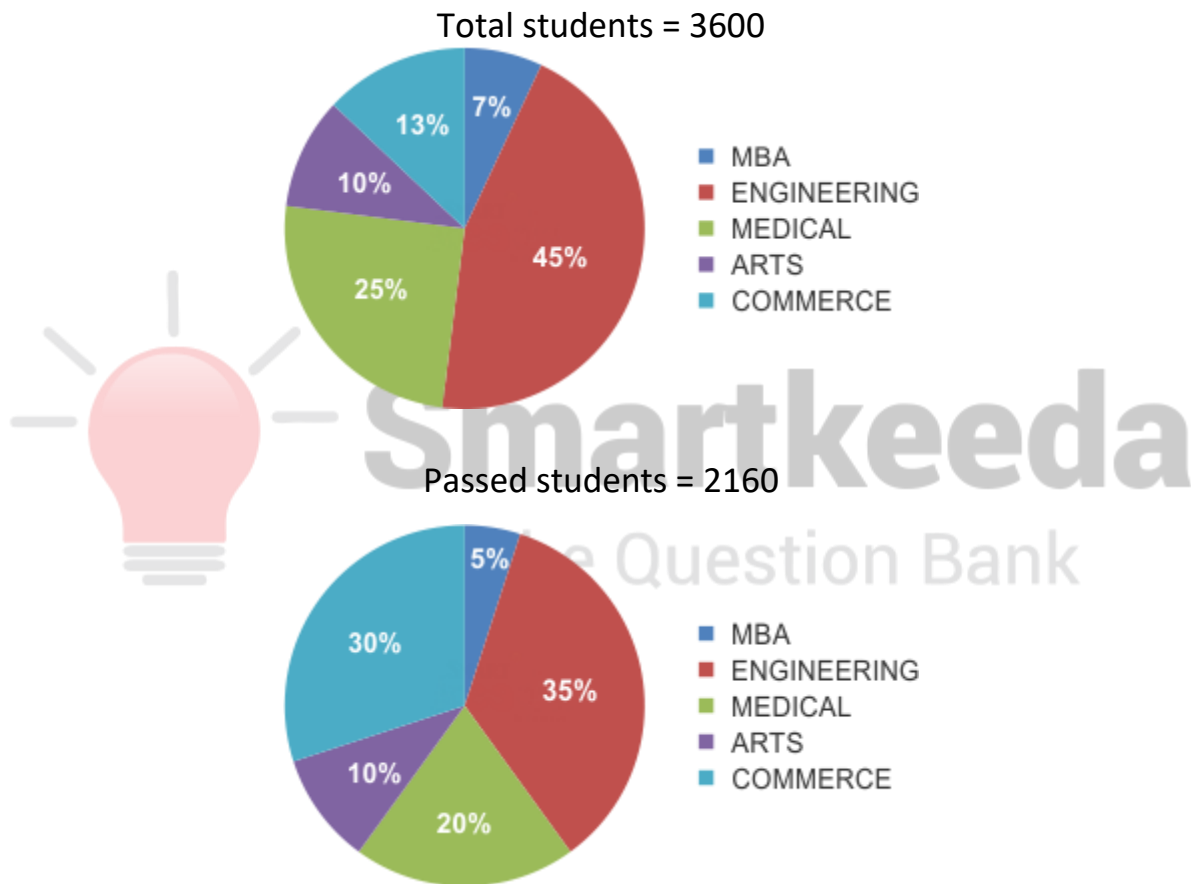


DI Pie Chart Questions for SBI Clerk Pre, IBPS Clerk Pre, IBPS RRB Assistant Pre and LIC Assistant Pre Exams.

DI Pie Chart No. 67

Directions: Study the following pie chart carefully and answer the questions given beside.

The following chart shows the distribution of students in different streams in a college and the number of students who passed from this college.



1. Find the ratio between the number of students in arts and number of students who passed in arts.

- A. 3 : 4 B. 5 : 3 C. 6 : 7 D. 2 : 5 E. 3 : 7

2. What percentage of students in engineering stream passed?

- A. 48.66% B. 42.66% C. 46.66% D. 45.66% E. 44.66%

3. If 800 more students joined the college in new stream Journalism and increasing the number of passed students by 33.33%, the find the percentage of students failed in college.

- A. 37.66% B. 32.65% C. 33.33% D. 34.54% E. 36.54%

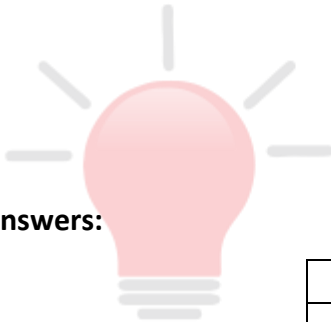
4. If next year, 1152 students joined the college and thereby increasing the number of passed students by 10%, then find the percentage of students passed in the college next year.

- A. 50% B. 48% C. 42% D. 56% E. 49%

5. Find the average of the number of students passed in MBA, Medical and Commerce streams.

- A. 315 B. 327 C. 318 D. 369 E. 396

Correct Answers:



1	2	3	4	5
B	C	D	A	E

Smartkeeda

The Question Bank



www.smartkeeda.com | testzone.smartkeeda.com

SBI | RBI | IBPS | RRB | SSC | NIACL | EPFO | UGC NET | LIC | Railways | CLAT | RJS



Explanations :

1. Number of students in arts = $10\% \times 3600 = 10 \times 36$

Number of students passed in arts = $10\% \times 2160 = 1 \times 216$

$$\text{Reqd. ratio} = 10 \times \frac{36}{216} = 5 : 3$$

Hence, option B is the correct answer.

2. The ratio of the total number of students to the number of students passed

$$= \frac{3600}{2160} = 5 : 3$$

Number of students in engineering = 45×5

Number of students passed in engineering = 35×3

$$\begin{aligned} \text{Reqd. \%} &= 35 \times 3 \times \frac{100}{45 \times 5} \\ &= 46.66\% \end{aligned}$$

Hence, option C is the correct answer.

3. Total appeared students = $3600 + 800 = 4400$

$$\text{Passed students} = 2160 \left(1 + \frac{1}{3}\right) = 2160 \times \frac{4}{3} = 2880$$

Failed students = $4400 - 2880 = 1520$

$$\text{Reqd. \%} = 1520 \times \frac{100}{4400} = 34.54\%$$

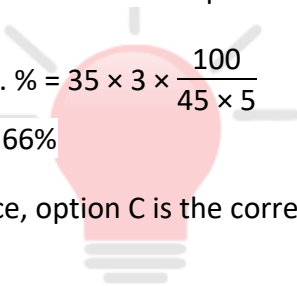
Hence, option D is the correct answer.

4. Total appeared students = $3600 + 1152 = 4752$

Total passed students = $2160 + 216 = 2376$

$$\text{Reqd. \%} = 2376 \times \frac{100}{4752} = 50\%$$

Hence, option A is the correct answer.



5. Passed students in MBA = $5\% \times 2160$

Passed students in Medicine = $20\% \times 2160$

Passed students in Commerce = $30\% \times 2160$

$$\begin{aligned} \text{Reqd. average} &= \{5 + 20 + 30\}\% \times \frac{2160}{3} \\ &= 396 \end{aligned}$$

Hence, option E is correct.



Smartkeeda
The Question Bank



www.smartkeeda.com | testzone.smartkeeda.com

SBI | RBI | IBPS | RRB | SSC | NIACL | EPFO | UGC NET | LIC | Railways | CLAT | RJS





Presents

Testzone

India's least priced Test Series Platform

BEST VALUE

**All Banks Exams
2022-23**

@ Just

Rs. 599

- ✓ Brilliant Test Analysis
- ✓ Excellent Content
- ✓ Unmatched Explanation

JOIN NOW

testzone.smartkeeda.com