



Bipin Nambiar
(SBI PO 2018)



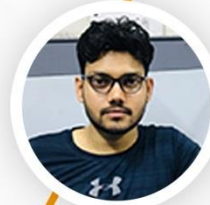
Shiraz Khan
(SBI Clerk 2018)



Kuldeep Yadav
(SBI PO 2018)



Rajat Saxena
(IBPS Clerk 2018)



Anupam Tyagi
(IBPS PO 2018)

FRIENDS!
WE USED **TESTZONE**
AND CRACKED BANK EXAMS

बैंक परीक्षाओ के लिए निश्चित
रूप से सर्वश्रेष्ठ मॉक
टेस्ट सीरीज

IT'S YOUR TURN NOW
TAKE A **FREE** MOCK TEST



Smartkeeda
The Question Bank

Simplification Quiz for Bank Clerk Pre Exam

Simplification Quiz 13

Directions: What value should come in place of Question mark (?) in the following question?

1. $323.46 + 23.04 - 43.17 - ? = 303$

- A. 0.33 B. 1.33 C. 1.23
D. 0.21 E. 0.51

2. $48.2 \times 2.5 \times 2.2 + ? = 270$

- A. 6.5 B. 2.8 C. 4.9
D. 3.4 E. 1.2

3. $1\frac{1}{2} + 2\frac{2}{7} = 3\frac{1}{2} + ?$

- A. $\frac{2}{3}$ B. $\frac{2}{7}$ C. $\frac{5}{8}$
D. $\frac{7}{2}$ E. $\frac{1}{7}$

4. $\frac{2176 - 56 \times ?}{64} = 20$

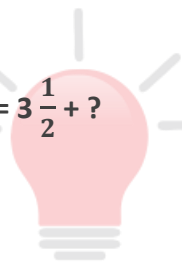
- A. 35 B. 20 C. 25
D. 16 E. 40

5. $128.43 + 30.21 + ? = 173$

- A. 35.66 B. 29.66 C. 43.66
D. 24.66 E. 14.36

6. $1817 - 23 + 26 - 1385 = ?$

- A. 225 B. 435 C. 324
D. 128 E. 380



Smartkeeda
The Question Bank

7. $? - \sqrt{784} = 6 \times \sqrt{324}$

A. 128

B. 160

C. 236

D. 53

E. 136

8. $456 \div 6 \times 598 \div 23 - ? = 12^3$

A. 160

B. 406

C. 213

D. 345

E. 248

9. $32\% \text{ of } 825 + 25\% \text{ of } 1440 = 1080 - ?$

A. 456

B. 206

C. 223

D. 216

E. 125

10. $\frac{616}{22} + \frac{416}{13} = 11^2 - ?$

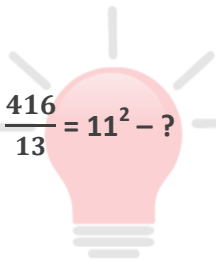
A. 56

B. 34

C. 61

D. 28

E. 49



Smartkeeda

The Question Bank

Join us on Telegram for more PDFs

Click here



Correct Answers:

1	2	3	4	5	6	7	8	9	10
A	C	B	D	E	B	E	E	A	C

Explanations:

1. $323.46 + 23.04 - 43.17 - ? = 303$

or, $? = 303.33 - 303 = 0.33$

Hence, option A is correct.

2. $48.2 \times 2.5 \times 2.2 + ? = 270$

or, $? = 270 - 48.2 \times 2.5 \times 2.2$

$= 270 - 48.2 \times 5.5 = 270 - 265.1 = 4.9$

Hence, option C is correct.

3.

$1\frac{1}{2} + 2\frac{2}{7} = 3\frac{1}{2} + ?$

or, $(1 + 2 - 3) + \left(\frac{1}{2} + \frac{2}{7} - \frac{1}{2}\right) = \frac{2}{7}$

Hence, option B is correct.

4.

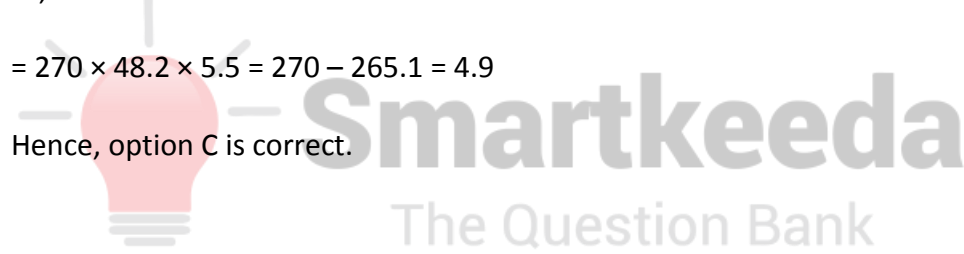
$\frac{2176 - 56 \times ?}{64} = 20$

or, $2176 - 56 \times ? = 20 \times 64$

or, $56 \times ? = 2176 - 1280 = 896$

$\therefore ? = \frac{896}{56} = 16$

Hence, option D is correct.



5. $128.43 + 30.21 + ? = 173$

or, $? = 173 - 158.64 = 14.36$

Hence, option E is correct.

6. $1817 - 23 + 26 - 1385 = ?$

or, $1843 - 1408 = 435$

Hence, option B is correct.

7. $? - \sqrt{784} = 6 \times \sqrt{324}$

or, $? = 6 \times 18 + 28$

or, $108 + 28 = 136$

Hence, option E is correct.

8. $456 \div 6 \times 598 \div 23 - ? = 12^3$

or, $? = 76 \times 26 - 1728$

$= 1976 - 1728 = 248$

Hence, option E is correct.

9. $32\% \text{ of } 825 + 25\% \text{ of } 1440 = 1080 - ?$

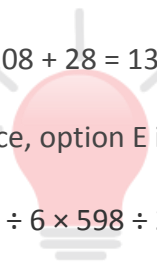
or, $? = 1080 - (32\% \text{ of } 825 + 25\% \text{ of } 1440)$

$= 1080 - \left(32 \times 8.25 + \frac{1}{4} \times 1440 \right)$

$= 1080 - (264 + 360)$

$= 1080 - 624 = 456$

Hence, option A is correct.



Smartkeeda

The Question Bank

10.

$$\frac{616}{22} + \frac{416}{13} = 11^2 - ?$$

or, $28 + 32 = 121 - ?$

or, $? = 121 - 60 = 61$

Hence, option C is correct



Smartkeeda

The Question Bank

Join us on Telegram for more PDFs
Click here





SmartKeeda

The Question Bank

Presents

TestZone

India's least priced Test Series platform

JOIN

ALL BANK EXAMS

2019-20 Test Series

@ Just

₹ 499/-

300+ Full Length Tests

- Brilliant Test Analysis
- Excellent Content
- Unmatched Explanations

JOIN NOW