



SmartKeeda

The Question Bank

Presents

TestZone

India's least priced Test Series platform

JOIN

12 Month Plan

2017-18 All Test Series

@ Just

₹ 399/-

300+ Full Length Tests

- ☒ Brilliant Test Analysis
- ☒ Excellent Content
- ☒ Unmatched Explanations

JOIN NOW

Railways (Group-D & ALP) Science Questions with solution

RRB Science MCQs Quiz 3

Directions: Study the following questions carefully and choose the right answer:

1. The element of Electric stove is made of:

- A. Copper B. Invar C. Magnalium D. Nicrome

2. Which of the following is the weakest force?

- A. Gravitational force B. Electromagnetic Force C. Nuclear Force
D. Electrostatic force

3. The method of protecting iron from rusting, by coating a thin layer of Zinc is called:

- A. Galvanizing B. rancidity C. Alloy D. Pulverizing

4. The material which can be deformed permanently by heat and pressure is called a:

- A. Thermoplastic B. Thermoset C. Chemical compound D. Polymer

5. Which of the following elements is least electronegative?

- A. Sodium B. Oxygen C. Magnesium D. Calcium

6. "Histology" is the study of:

- A. Bones B. Coins C. Tissues D. History

7. Which of the following in the human body is popularly called the Adam's apple?

- A. Adrenal B. Liver C. Thyroid D. Thymus

8. Second's pendulum is a pendulum which executes one oscillation in:

- A. Half a second B. One second C. Two seconds D. None of these

9. Small pox is a deadly and highly contagious:

- A. Bacterial Disease B. Viral disease C. Fungal disease
D. Vitamin deficiency disease

10. SI unit of magnetic flux is:

- A. Weber B. Tesla C. Henry/meter D. Weber/meter²

11. The term “Heavy water” refers to:

- A. Ice B. Deuterium oxide C. Re-distilled water D. Water at $4 \frac{1}{2}^{\circ} \text{C}$

12. Trachoma is a disease of the

- A. Liver B. Eyes C. Lungs D. Kidneys

13. The mass density of Kerosene is:

- A. more than water B. equal to water C. Less than water D. None of the above

14. One horse power is equal to:

- A. 523 watts B. 746 watts C. 816 watts D. 719 watts

15. Optics is the study of:

- A. Nature and properties of light B. Old age, its phenomenon, disease etc
C. Disease of the nervous system D. Symbolic representations

16. The pitch of the sound is measured by its:

- A. Intensity B. waveform C. Frequency D. Loudness

17. Plants used for the production of biofuel are:

- A. Pongamia glabra B. Jatropha curcus C. Acacia melanoxylon D. Azadirachta indica

18. Which of the following acts as a resistance against disease in the body?

A. Carbohydrates

B. Red corpuscles

C. Vitamins

D. White corpuscles

19. Which of the following normally warms up faster when heat is applied?

A. Water

B. Glass

C. Iron

D. Wood

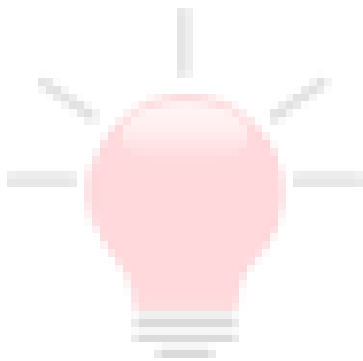
20. The person suffering from “myopia” cannot see the objects at:

A. Near distance

B. Longer distance

C. any distance

D. Close to eye



SmartKeeda
The Question Bank

Correct Answers:

1	2	3	4	5	6	7	8	9	10
D	A	A	B	A	C	C	C	B	A

11	12	13	14	15	16	17	18	19	11
B	B	C	B	A	C	B	D	C	B

Explanations:

1.

Most **heating** elements use **nichrome** 80/20 (80% **nickel**, 20% **chromium**) wire, ribbon, or strip. **Nichrome** 80/20 is an ideal material, because it has relatively high resistance.

Hence, option D is correct.

2.

Gravitational force is the weakest force.

Hence, option A is correct.

3.

Galvanisation or galvanization (or galvanizing as it is most commonly called) is the process of applying a protective zinc coating to iron or steel, to prevent rusting.

Hence, option A is correct.

4.

Thermoset materials are those materials that are made by polymers joined together by chemical bonds, acquiring a highly cross linked polymer structure. They cannot melt.

Hence, option B is correct.

5.

Sodium is the least electronegative in all the given options.

Electronegativity refers to the ability of an atom to attract shared electrons in a covalent bond. The higher the value of the electronegativity, the more strongly that element attracts the shared electrons.

The concept of electronegativity was introduced by Linus Pauling in 1932.

Hence, option A is correct.

6.

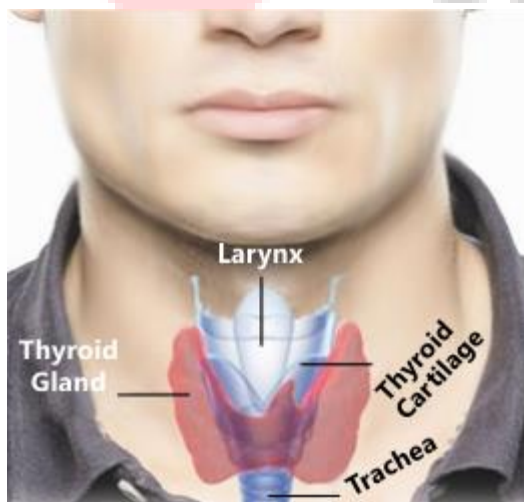
The study of human and animal tissues is known as histology.

Study of cell is called Cytology.

Hence, option C is correct.

7.

Thyroid cartilage located at human neck is known as "Adam's Apple".



Hence, option C is correct.

8.

A pendulum is a weight suspended from a pivot so that it can swing freely.

A seconds pendulum is a pendulum whose period is precisely two seconds; one second for a swing in one direction and one second for the return swing, a frequency of $1/2$ Hz.

Hence, option C is correct.



9.

Smallpox is a contagious disease caused by the Variola virus, so it is a viral disease.

Hence, option B is correct.

10.

The SI unit of magnetic flux is Weber (Wb).

Hence, option A is correct.

11.

Normal water is made of two hydrogen atoms and an oxygen atom covalently bonded together. This gives the famous H_2O formula.

Heavy water has exactly the same structure, except the hydrogen atoms are isotopes of hydrogen called 'Deuterium'. Standard hydrogen has one proton in its nucleus (Relative Molecular Mass = 1), deuterium has one proton and one neutron in its nucleus, (RMM = 2) hence it is 'heavier' than normal hydrogen. This leads to the water being heavier. Mass of water = 18, mass of heavy water = 20.

Heavy water is used in certain types of nuclear reactors, where it acts as a neutron moderator to slow down neutrons.

Hence, option B is correct.

12.

Trachoma is an infectious disease caused by bacterium *Chlamydia trachomatis*. The infection causes a roughening of the inner surface of the eyelids. This roughening can lead to pain in the eyes, breakdown of the outer surface or cornea of the eyes, and eventual blindness.



Hence, option B is correct.

13.

Kerosene is lighter than water in terms of density.

Density of kerosene is 820 kg / m^3 , means if you take 1000 liters of kerosene it would weight 820kg.

Whereas density of water is 1000 kg / m^3 means if you take 1000 liters of water it would weight 1000kg.

Hence, option C is correct.

14.

One horse power is equal to 746 watts.

Hence, option B is correct.

15.

Optics is the branch of physics which involves the behavior and properties of light, including its interactions with matter.

Optics usually describes the behavior of visible, ultraviolet, and infrared light.

Hence, option A is correct.

16.

Pitch relates to the frequency, or how many times a second the particles vibrate. The distance between one wave and the next gives the wavelength. For sounds all travelling at the same speed, high-frequency (high-pitched) sounds have waves very close together. Low-frequency sounds have a greater distance between each wave.

The higher the pitch, the higher the frequency.

Hence, option C is correct.

17.

Several groups in various sectors are conducting research on *Jatropha curcas*, a poisonous shrub-like tree that produces seeds considered by many to be a viable source of biofuels.

Hence, option B is correct.

18.

White corpuscles or the White blood cells (WBCs), also called leukocytes or leucocytes, are the cells of the immune system that are involved in protecting the body against both infectious disease and foreign invaders.

Hence, option D is correct.

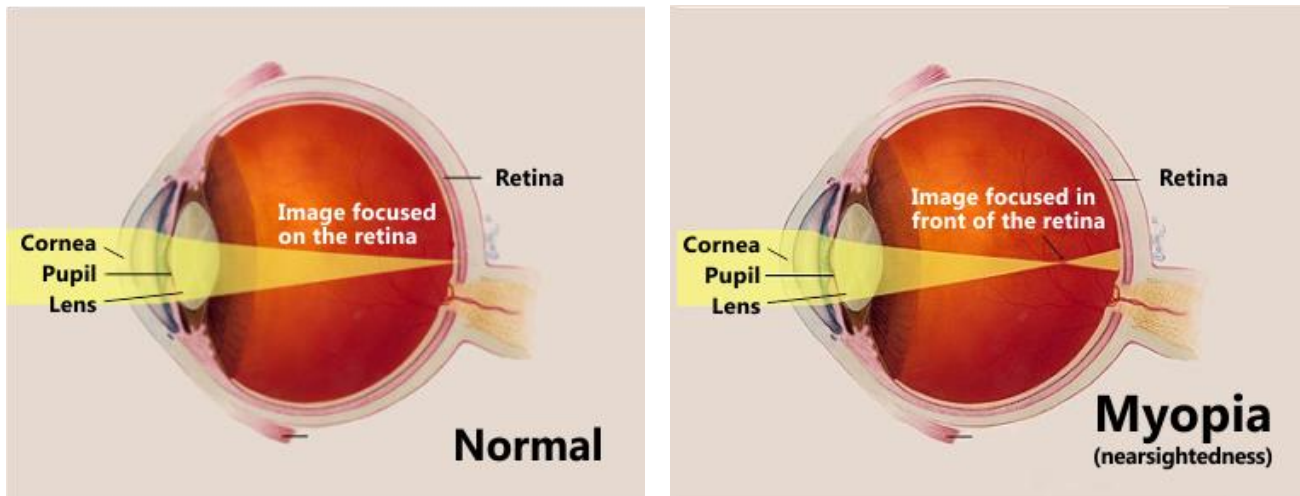
19.

Iron warms up faster than other options when heat is applied to it.

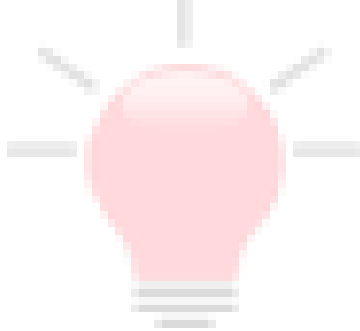
Hence, option C is correct.

20.

Nearsightedness, also known as myopia, is a common type of refractive error where close objects appear clearly, but distant objects appear blurry.



Hence, option B is correct.



SmartKeeda
The Question Bank



SmartKeeda

The Question Bank

प्रस्तुत करते हैं

TestZone

भारत की सबसे किफायती टेस्ट सीरीज़



12 Month Plan

2017-18 All Test Series

@ Just

₹ 399/-

300+ फुल लेन्थ टेस्ट

- ✓ श्रेष्ठ विश्लेषण
- ✓ उत्कृष्ट विषय सामग्री
- ✓ बेजोड़ व्याख्या

अभी जुड़ें