

Why Aspirants Love Us



Amrita Singh ★★★★★

If u want to practice of any exams then you should definitely use this app. I really loved it



Anjali Sanap

I am rating this app 5 star because this app provides all types of questions from easy level to difficult level and this app increased my calculation speed in maths. Just loved it



Ritika ★★★★★

This App is very useful for me because it is very easy in use and many practice sets available in this app, this is first app which I use for preparation for competitive exam and it is very useful for me.



Sweta Sahoo

This is the Best App enough material to practice and solution of each question is explained in detailed manner. I really appreciate it.



Rahul Jha ★★★★★

Best TestSeries for Competitive Exams. Quality questions with detailed explanation. And the price is also reasonable so that everyone can afford it and take edge over others. Thank you Team Smartkeeda



Smartkeeda
The Question Bank

Mixed Reasoning for SSC Exams.

SSC Reasoning Quiz 5

Directions: Read the following questions carefully and choose the right answer.

1. Select the related words/letters/numbers from the given alternatives.

_____ : Zenith :: Fear : Composure

- A. Apex B. Nadir C. Heights D. Foot-note

2. Select the related words/letters/numbers from the given alternatives.

BELOW : BLWEO :: ABOVE : ?

- A. AVEOB B. BOVEA C. AOEBV D. ABVEO

3. Arrange the given words as per Dictionary order and select the right option.

A. Rank B. Rain C. Rare D. Rackle E. Ravish

- A. DEBAC B. DEBCA C. DBACE D. DBCEA

4. Find the missing term of the following series from the given alternatives.

CGL , XHN , TJP , QMR , ?

- A. PQZ B. OQT C. OQR D. QOR

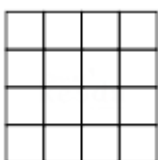
5. If A2B means A is the father of B, A4B means A is the brother of B, A5B means A is the mother of B and A6B means A is the daughter of B, then in "J5Q6L2O4S" how is S related to Q?

- A. Brother B. Sister C. Daughter D. Can't be determined

6. Which of the following words cannot be formed from "RESTAURANT"?

- A. Truant B. Statue C. Rarest D. Retreat

7. Find the total number of squares in the given image



- A. 32 B. 28 C. 30 D. 31

8. In a food festival, Idli stall is 10 m north from the entry gate. Paav bhaji stall is 5 m west of Idli stall and 6 m south of Chowmein stall. Burger stall is 8 m east of Chowmein stall. Yash is standing at Paav bhaji stall.

How far and in which direction Yash has to move to reach Burger stall?

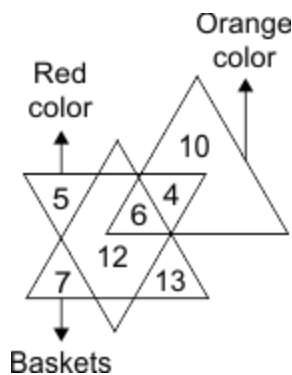
- A. 10m, Northwest B. 10m, Northeast C. 10m, Southwest D. 10m, Southeast

9. A word is represented by only one set of numbers as given in any one of the alternatives. The sets of numbers given in the alternatives are represented by two classes of alphabets as in two matrices given below. The columns and rows of Matrix I are numbered – from 0 to 4 and that Matrix II are numbered from 5 to 9. A letter from these matrices can be represented first by its row and next by its column, e.g., 'N' can be represented by 01, 14, etc. and I can be represented by 55, 66 etc. Similarly, you have to identify the set for the word 'THINK'.

Matrix - I						Matrix - II					
	0	1	2	3	4		5	6	7	8	9
0	K	N	G	R	Z	5	I	M	H	A	T
1	G	R	Z	K	N	6	H	I	T	M	A
2	Z	K	N	G	R	7	T	A	I	H	M
3	N	G	R	Z	K	8	A	T	M	I	H
4	R	Z	K	N	G	9	M	H	A	T	I

- A. 86, 57, 99, 14, 42 B. 98, 65, 86, 43, 34 C. 59, 75, 77, 30, 00 D. 75, 78, 66, 21, 13

10.



How many baskets are neither of red color nor of orange color?

- A. 18 B. 20 C. 5 D. None of these

Correct Answers:

1	2	3	4	5	6	7	8	9	10
B	C	C	B	D	D	C	B	A	B



Smartkeeda
The Question Bank

www.smartkeeda.com | testzone.smartkeeda.com

SBI | RBI | IBPS | RRB | SSC | NIACL | EPFO | UGC NET | LIC | Railways | CLAT | RJS



[Join us](#)

Explanations :

1. 'Nadir' is the opposite of 'Zenith', and 'Fear' is the opposite of 'Composure'.

Clearly, Option B is the correct answer.

2. The letters at odd number positions in the word BELOW i.e. B, L and W are written first and then letters at even number positions i.e. E and O are written.

Thus the word formed so is BLWEO.

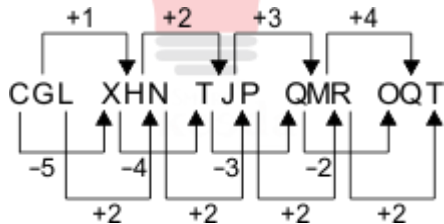
Similar process is followed in the word 'ABOVE' to obtain "AOEBV".

Hence, Option C is correct.

3. Rackle (D) → Rain (B) → Rank (A) → Rare (C) → Ravish (E)

Hence, Option (C) is correct.

4.



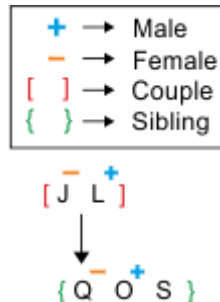
The missing term as per the image shown above is **OQT**.

Hence, Option B is correct.

5. From the given code i.e. "J5Q6L2O4S", following information can be derived.

J is the mother of Q, Q is the daughter of L, L is the father of O, O is the brother of S.

Below family tree image can be drawn using this information.



As we don't know the gender of S, thus we can't derive the relation.

Hence, Option D is the correct answer.

6. Only "Retreat" cannot be formed from the key word.

It requires an extra 'E' from the keyword **Restaurant**.

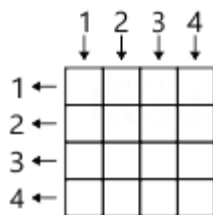
Option A- Truant can be formed as shown here- **Restaurant**.

Option B- Statue can be formed as shown here- **Restaurant**.

Option C- Rarest can be formed as shown here- **Restaurant**.

Hence, Option D is correct.

7. To identify the number of squares, first we have to count the number of rows and columns.



As we can see that the number of rows and columns are 4 i.e. equal.

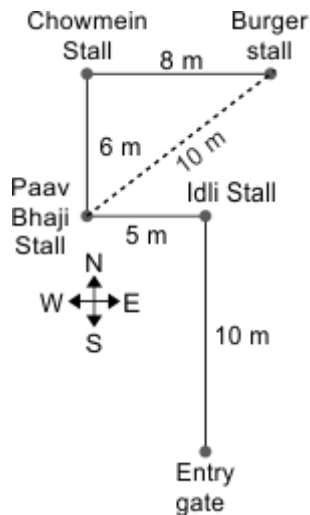
The total number of squares will be obtained by adding the square of the numbers till 4.

$$\text{Total no. of squares} = (1)^2 + (2)^2 + (3)^2 + (4)^2 = 1 + 4 + 9 + 16 \Rightarrow 30$$

Thus the total number of squares in the given image is 30.

Hence, Option C is correct.

8.



From the following image it is clear that Yash has to move 10m in northeast direction to reach Burger stall.

Using Pythagoras theorem,
 $= \sqrt{6^2 + 8^2} = \sqrt{36 + 64} = \sqrt{100} = 10$

Hence, Option B is the correct answer.

9.

From the option A, we get the required word.

Matrix - I					Matrix - II				
0	1	2	3	4	5	6	7	8	9
0					5		H		
1				N	6				
2					7				
3					8	T			
4		K			9				I

Hence, Option A is correct.

10. That part of the triangle that represents "Baskets" which is not intersected by any other triangle represents the baskets which are neither red nor orange in color.

Hence $13 + 7 = 20$ baskets are such which are neither red nor orange in color.

Hence, Option B is correct.



Smartkeeda

The Question Bank

Presents

Testzone

India's least priced Test Series Platform

BEST VALUE

**All SSC Exams
2022-23**

@ Just
Rs. 499

- ✓ Brilliant Test Analysis
- ✓ Excellent Content
- ✓ Unmatched Explanation

JOIN NOW

testzone.smartkeeda.com