



# SmartKeeda

The Question Bank

Presents

## TestZone

India's least priced Test Series platform

JOIN

### 12 Month Plan

2018-19 All Test Series

@ Just

# ₹ 499/-

300+ Full Length Tests

- Brilliant Test Analysis
- Excellent Content
- Unmatched Explanations

JOIN NOW

# Simplification Questions for SBI Clerk Pre, IBPS Clerk Pre, RRB Scale I Pre & IBPS RRB

## Simplification Quiz 24

Direction: What value should come in place of question mark?

1.  $534.256 - 786.56 + 678.45 + 45.325 - 23.123 = ?$

- A. 448.348                      B. 438.438                      C. 458.448  
D. 428.338                      E. None of these

2.  $(0.09)^7 \times \frac{0.000729}{(0.09)^5} \times 0.0081 = (0.3)^?$

- A. 17                                      B. 19                                      C. 16  
D. 14                                      E. None of these

3.  $2^{10} \times \frac{64}{256} \times 2^5 = 2^? \times 64$

- A. 3                                      B. 7                                      C. 6  
D. 5                                      E. None of these

4.  $133.344 + 1443.333 + 1444.333 + 1333.441 + 111.343 = ?$

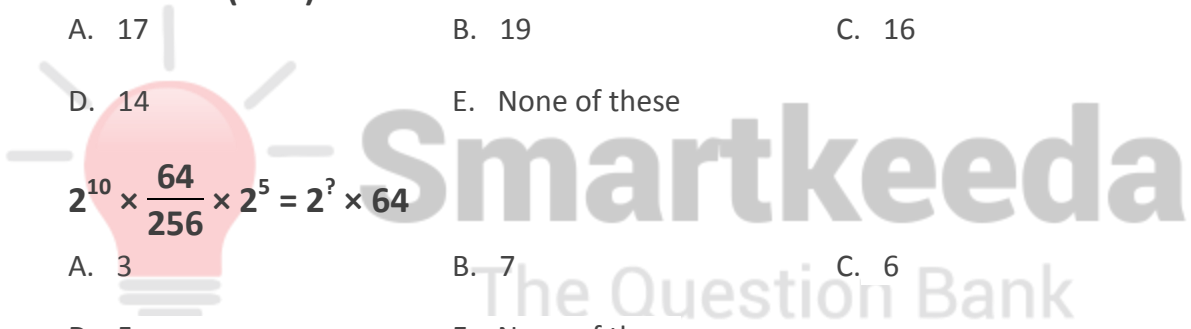
- A. 4456.794                      B. 4465.794                      C. 4645.974  
D. 4654.974                      E. None of these

5.  $(47)^2 + 6 \times (26)^2 - 805 \times 6 = ?$

- A. 1605                                      B. 1505                                      C. 1805  
D. 1435                                      E. None of these

6.  $4\frac{1}{5} + 6\frac{1}{4} - 7\frac{3}{5} + 9\frac{7}{4} = ?$

- A.  $53/5$                                       B.  $63/5$                                       C.  $68/5$   
D.  $58/5$                                       E. None of these



7.  $\sqrt{576} \times \sqrt{225} \times 36\% \text{ of } 1000 = ? + 540$

- A. 129060                      B. 139060                      C. 229060  
D. 149060                      E. None of these

8.  $25\% \text{ of } 40\% \text{ of } 325 + 123 \times 4 = ?$

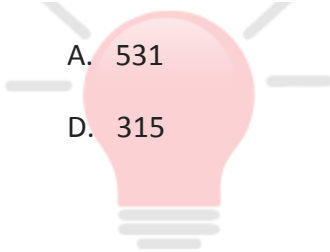
- A. 425.2                      B. 452.5                      C. 542.5  
D. 524.5                      E. None of these

9.  $155.54 + 1444.55 + 441.54 + 5155.454 = ?$

- A. 7179.804                      B. 7197.084                      C. 9197.084  
D. 9179.804                      E. None of these

10.  $16 \times 24 + 23 - ? = 28\% \text{ of } 200$

- A. 531                      B. 513                      C. 351  
D. 315                      E. None of these



**Correct answers:**

|   |   |   |   |   |   |   |   |   |    |
|---|---|---|---|---|---|---|---|---|----|
| 1 | 2 | 3 | 4 | 5 | 6 | 7 | 8 | 9 | 10 |
| A | D | B | B | D | C | A | D | B | C  |

**Explanations:**

**1.**

$$534.256 - 786.56 + 678.45 + 45.325 - 23.123 = 448.348$$

Hence, option (A) is correct.

**2.**

$$(0.09)^7 \times \frac{0.000729}{(0.09)^5} \times 0.0081 = (0.3)^x$$

$$(0.3)^{14} \times \frac{(0.3)^6}{(0.3)^{10}} \times (0.3)^4 = (0.3)^x$$

$$\Rightarrow (0.3)^{(14+6-10+4)} = (0.3)^x$$

Comparing the powers, we get

$$\Rightarrow x = 24 - 10$$

$$\Rightarrow x = 14$$

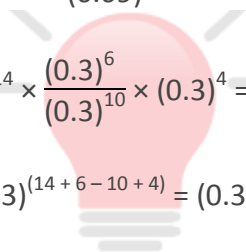
Hence, option (D) is correct.

**3.**

$$2^{10} \times \frac{64}{256} \times 2^5 = 2^? \times 64$$

$$\Rightarrow 2^{10} \times \frac{1}{4} \times 2^5 = 2^? \times 2^6$$

$$\Rightarrow 2^{10} \times \frac{1}{2^2} \times 2^5 = 2^? \times 2^6$$



$$\Rightarrow 2^{(10-2+5)} = 2^{(?+6)}$$

Comparing the powers, we get

$$\Rightarrow 15 - 2 = ? + 6$$

$$\Rightarrow ? = 13 - 6$$

$$\Rightarrow ? = 7$$

Hence, option (B) is correct.

**4.**

$$133.344 + 1443.333 + 1444.333 + 1333.441 + 111.343 = 4465.794$$

Hence, option (B) is correct.

**5.**

$$(47)^2 + 6 \times (26)^2 - 805 \times 6$$

$$= 2209 + 4056 - 4830$$

$$= 6265 - 4830 = 1435$$

Hence, option (D) is correct.

**6.**

$$4\frac{1}{5} + 6\frac{1}{4} - 7\frac{3}{5} + 9\frac{7}{4} = ?$$

$$= (4 + 6 - 7 + 9) + \left(\frac{1}{5} + \frac{1}{4} - \frac{3}{5} + \frac{7}{4}\right)$$

$$\Rightarrow 12 + \frac{4 + 5 - 12 + 35}{20}$$

$$\Rightarrow 12 + \frac{32}{20}$$



$$\Rightarrow 12 + \frac{8}{5}$$

$$\Rightarrow 12 + 1\frac{3}{5}$$

$$= 13\frac{3}{5}$$

Hence, option (C) is correct.

**7.**

$$\sqrt{576} \times \sqrt{225} \times 36\% \text{ of } 1000 = ? + 540$$

$$\Rightarrow 24 \times 15 \times \frac{36}{100} \times 1000 = x + 540$$

$$\Rightarrow 360 \times 360 = x + 540$$

$$\Rightarrow 129600 = x + 540$$

$$\Rightarrow x = 129600 - 540$$

$$\Rightarrow x = 129060$$

Hence, option (A) is correct.

**8.**

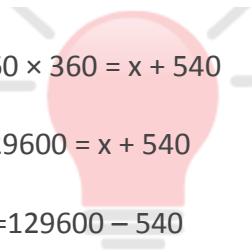
$$25\% \text{ of } 40\% \text{ of } 325 + 123 \times 4$$

$$= \frac{25}{100} \times \frac{40}{100} \times 325 + 492$$

$$= 524.5$$

Hence, option (D) is correct.

**9.**



**Smartkeeda**  
The Question Bank

$$155.54 + 1444.55 + 441.54 + 5155.454 = 7197.084$$

Hence, option (B) is correct.

**10.**

$$16 \times 24 + 23 - ? = 28\% \text{ of } 200$$

$$\Rightarrow 384 + 23 - x = 56$$

$$\Rightarrow x = 407 - 56$$

$$\Rightarrow x = 351$$

Hence, option (C) is correct.



# Smartkeeda

The Question Bank



# SmartKeeda

The Question Bank

प्रस्तुत करते हैं

## TestZone

भारत की सबसे किफायती टेस्ट सीरीज़

अभी  
जुड़ें

### 12 Month Plan

2018-19 All Test Series

@ Just

# ₹ 499/-

300+ फुल लेन्थ टेस्ट

- श्रेष्ठ विश्लेषण
- उत्कृष्ट विषय सामग्री
- बेजोड़ व्याख्या

अभी जुड़ें